



# DR120A3000

## Ventilating Dehumidification System

**SPECIFICATION DATA**

**DR120A3000 Capacities and Performance**

Part Number:	DR120A3000
Blower:	400 CFM @ 0.0 in. WG 295 CFM @ 0.4 in. WG
Supply Voltage:	120 VAC; 60 Hz.
Amps:	7.3 A
Power transformer to R/C terminals:	24 VAC, 0.85A
Energy performance:	2.9 liters (6.1 pints) per kilowatt hour (KWH)
Refrigerant:	R-410A
Operating Temp Range (outside cabinet):	34 – 135 °F (1.1 – 57.2 °C)
Capacity:	63 pints/day (60 °F [15.6 °C], 60 %RH) 88 pints/day (70 °F [21.1 °C], 60 %RH) 120 pints/day (80 °F [26.7 °C], 60 %RH)
Coverage:	Up to 3500 sq. ft.
Duct Connections:	6 in. Supply Inlet 10 in. Round Inlet 10 in. Round Outlet (ABS Plastic)
Filter Efficiency:	Standard MERV-11
Drain Connection:	3/4 in. threaded female NPT, with attached 3/4 in. threaded male NPT
Dimensions (See Fig. 1):	
Length without Collars:	25-7/8 in.
Width:	14-3/4 in.
Height:	20-1/2 in.
Collar Length (Each):	3-1/8 in.
Weight:	95 lbs (43.1 Kg)
Shipping Specs:	
Width:	19.3 in.
Height:	26 in.
Length:	35.8 in.
Weight:	104 lbs (47.2 Kg)
Optional Parts:	
Replacement Filter:	50070171-002
Motorized Ventilation Damper:	EARD6
10" Backdraft Damper:	SPRD10

ETL listed per UL474 and CSA 22.2 No. 92  
Energy Star rated

For more information call 1-800-468-1502 or visit our website at [customer.resideo.com](http://customer.resideo.com).

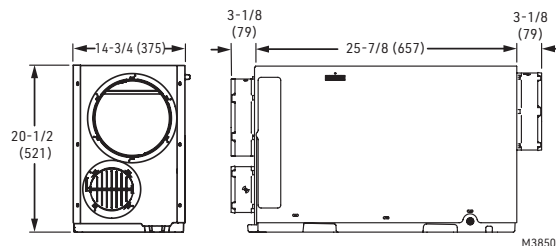
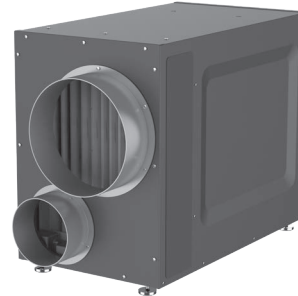


Fig. 1. Dimensions in in. (mm).

Resideo Whole-House Dehumidifiers are designed to help maintain proper humidity levels in the home. Lower humidity levels feel more comfortable, and helps safeguard against problems from excess moisture in the home such as mold, mildew, warped wood, peeling of paint, or musty odors. The DR120A3000 is Energy Star rated providing efficient and economical operation.

### Dehumidification

The Resideo DR120A3000 dehumidifier utilizes refrigeration and internal air circulation to cool the incoming air stream below its dew point. Water condenses and drains off the coil, sending drier air back into the house.

- Can remove up to 120 pints/day of moisture.
- Energy Star rated
- Multitude of external controller options
- Side ducted exhaust
- Reduced noise during operation
- MERV 11 air filtration

### Ventilation

The Resideo DR120A3000 has a separate control for ventilation, so the powerful onboard blower can be used to efficiently bring fresh air into the house even when dehumidification is not needed. The DR120A3000 has a 6" supply side damper that can be used to duct in air from the outside, or closed if not needed.

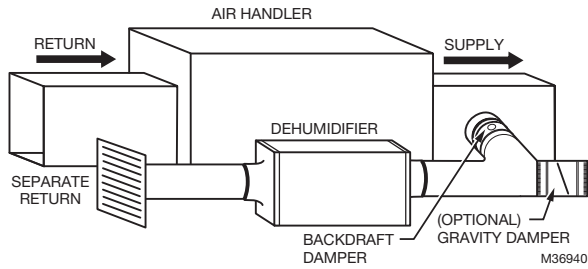
### Simplified Wiring

The Resideo DR120A3000 dehumidifiers can be controlled by a variety of 24-volt remote wired and wireless controls. The DR120A3000 allows the use of a 24V normally closed float switch or water sensor to simplify installation in a drain pan. This will allow the external float switch to kill power to the compressor in the event of water blockage.



**A**

## Dedicated Return to Main Supply

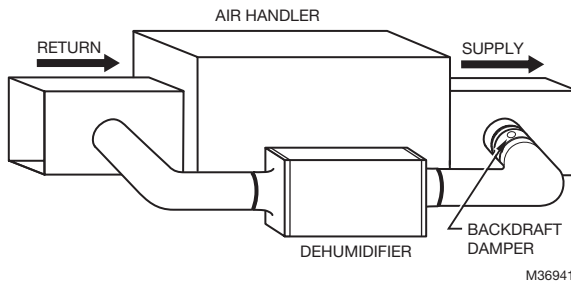


Ideal when...

- Access to a dedicated central return for DR120A3000 is available.
- Combined with A/C operation; requires backdraft damper on the exhaust port to minimize backdraft when DR120A3000 is not on but A/C is.
- Providing dry air to a specific area with an optional 20% open gravity damper on DR120A3000 supply.

**B**

## Main Return to Main Supply

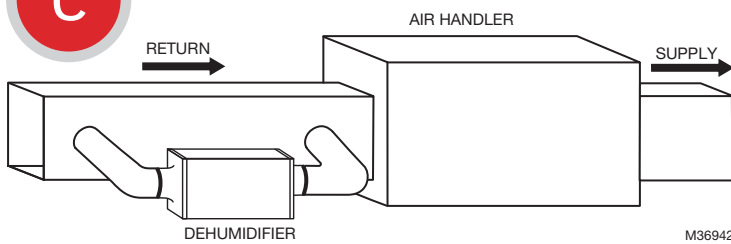


Ideal when...

- Running DR120A3000 when not running A/C. Requires damper on the exhaust port to minimize backdraft when DR120A3000 is not on but A/C is.
- Access to a dedicated central return for DR120A3000 is not available.
- System fan should run with dehumidifier for best results.

**C**

## Main Return to Main Return

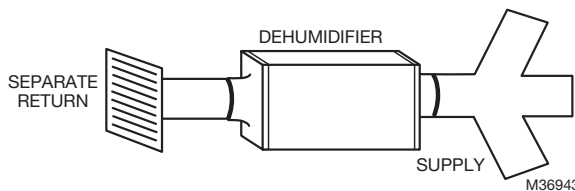


Ideal when...

- Running DR120A3000 with A/C operation.
- System fan must run with dehumidifier.
- Minimizing discharge air temperature (DAT) increase is preferred.
- Access to a dedicated central return for DR120A3000 is not available.

**D**

## Dedicated Return to Dedicated Supply



Ideal when...

- DR120A3000 will not be ducted to a forced air HVAC system.

For best performance, the minimum distance required between the air inlet and outlet when utilizing a Main Return/Main Return location is 5 feet.